

# Running Victoria Hand Project Scoliosis Software


WALKTHROUGH FOR TESTING


CREATED BY: KELLY KNIGHTS – [KNIGHTS@VICTORIAHANDPROJECT.COM](mailto:KNIGHTS@VICTORIAHANDPROJECT.COM)

## Table of Contents

Introduction and Running .....	1
Login, Homepage and Step 1 of 8 .....	2
Step 2 of 8 .....	2
Step 3 of 8 (Optional) .....	3
Step 4 of 8 (Optional) .....	4
Step 5 of 8 (Optional) .....	5
Step 6 of 8 (Optional) .....	6
Step 7 of 8 .....	7
Step 8 of 8 .....	8
Review and Final Export Settings .....	9

The following are detailed instructions on how to use the Scoliosis Brace Designer Software created by the Victoria Hand Project. If you have not installed the software yet, please see the **‘Scoliosis-Software-Installation-Guide’** document.

- 

- 

- The screenshot displays the 'Scoliosis Brace Guide Application' interface. On the left, there is a stylized blue line drawing of a human torso showing the spine. The central part of the interface features the 'Victoria Hand Project' logo, which consists of a blue stylized hand icon and the text 'Victoria Hand Project'. Below the logo are two input fields: 'Email Address' and 'Password'. Under the password field is a blue 'Log In' button, and below that is a link for 'Reset Password'. At the bottom left of the login section is the text 'Don't have an account?' and a blue 'Sign Up' button. On the right side of the interface, there is a 3D model of a scoliosis brace. The brace is dark grey and has several anatomical labels with leader lines pointing to specific areas: 'APB', 'APB1', 'T10/T11', 'Lower Rib', 'IMB', 'Axilla', 'Chest', 'Xiphoid', 'APB2', 'Lower Rib', 'Greater Trochanter', 'Waist', 'ASIS', and 'Greater Trochanter'. The top of the application window shows a standard web browser address bar with the URL 'http://localhost:3000/'.

### Login, Homepage and Step 1 of 8 (Initial Information)


- 4) Click 'Log In' (no email address or password required for testing purposes) and then click 'New Brace' on the Home Page. For Demo purposes, on Step 1 of 8 the only mandatory field is 'Units of Measurement'. Select Metric (cm) or Imperial (inches) from the dropdown menu.

Units of Measurement:

Metric (cm)

Metric (cm)

Imperial (Inches)

- 5) Click the  button to advance to the fitting sheet pages.

### Step 2 of 8 (Front Measurements)

- 6) Enter the dimensions of the brace you would like to generate. At this time, the software **DOES NOT** require the circumference measurements. The software **DOES** require Medial-Lateral, Anterior-Posterior and Superior-Inferior measurements. To generate a preview on the Fusion screen, press the 'Update Brace' button. You may need to wait approximately 5 minutes to see your changes reflected on the Fusion screen. **\*\*\*PLEASE MAKE SURE TO CLICK UPDATE BRACE BEFORE ADVANCING TO THE NEXT PAGE\*\*\***

**Scoliosis Brace Fitting Sheet** **Step 2 of 8**

Front Measurements

Anterior View

**Circumference**

☐ Enter # (cm)

☐ Enter # (cm)

☐ Enter # (cm)

☐ Enter # (cm)

☐ Enter # (cm)

☐ Enter # (cm)

☐ Enter # (cm)

☐ Enter # (cm)

**Medial / Lateral**

Enter # (cm)

Enter # (cm)

Enter # (cm)

Enter # (cm)

Enter # (cm)

Enter # (cm)

Enter # (cm)

Enter # (cm)

**Anterior / Posterior**

Enter # (cm)

Enter # (cm)

Enter # (cm)

Enter # (cm)

Enter # (cm)

Enter # (cm)

Enter # (cm)

Enter # (cm)

Sternal Notch

Axilla

Chest

Xyphoid

Lower Rib

Waist

ASIS

Greater Trochanter

Enter # (cm)

Enter # (cm)

Enter # (cm)



Enter # (cm)

Enter # (cm)

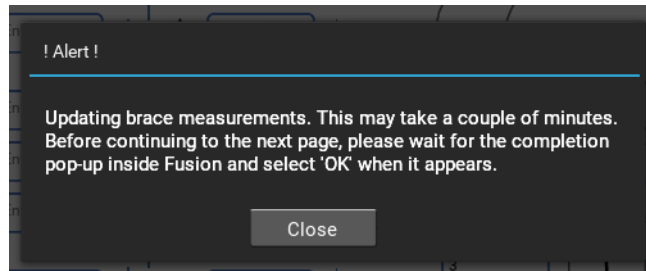
Enter # (cm)

Enter # (cm)

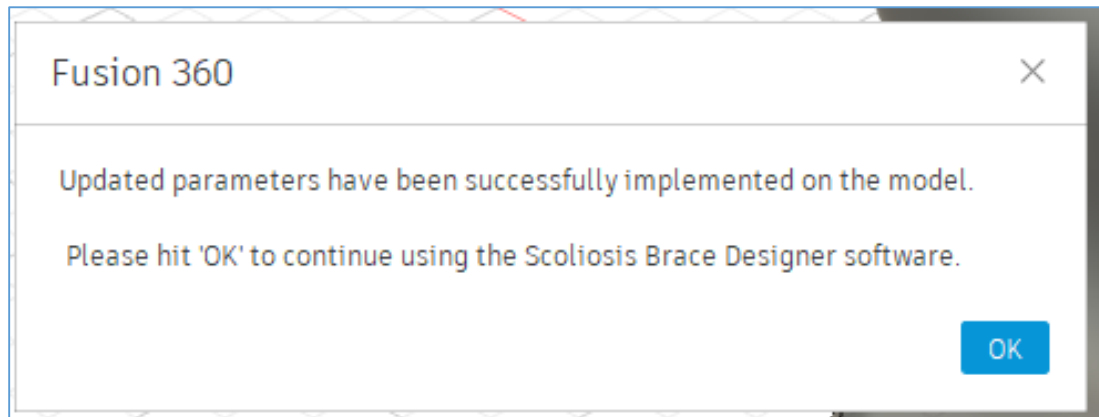
Enter # (cm)

 **Update Brace** 

You will see a popup in the User Interface. You may close this anytime by clicking 'Close'




You will see a popup on the Fusion 360 screen when the model is finished updating. You may close this by clicking 'OK'.

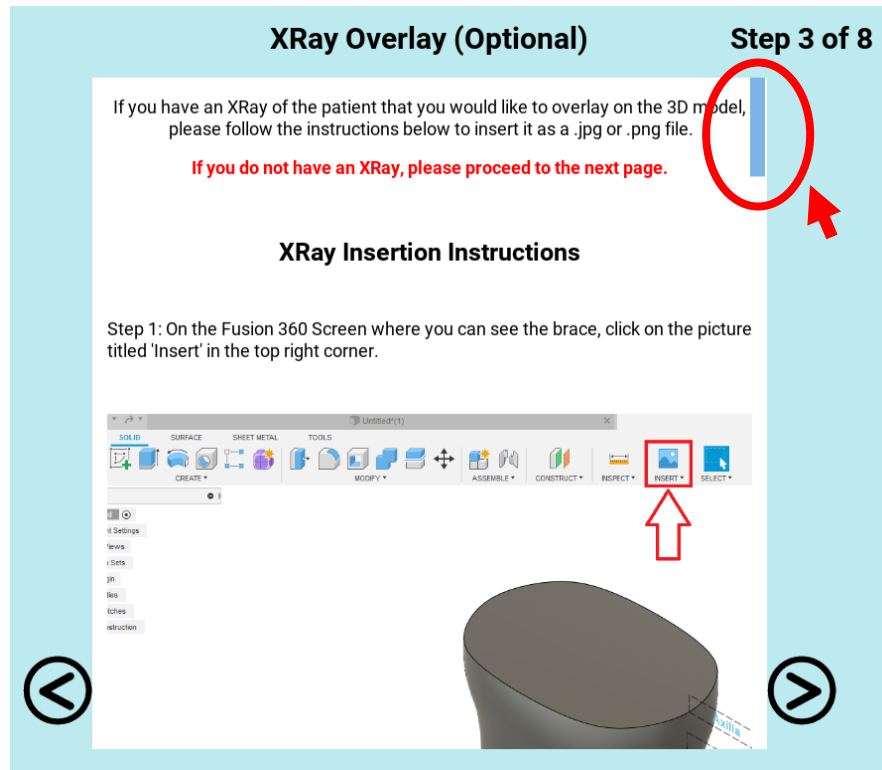


After the brace is updated, and **after you have closed the popup on the Fusion 360**

**screen**, you may continue to the next screen by pressing  in the User Interface.


#### Step 3 of 8 (XRay Overlay - Optional)


- 7) Follow the instructions to insert an XRay (Optional). Scroll using the blue bar on the right, or your mouse. If you do not have an XRay, continue to the next page .

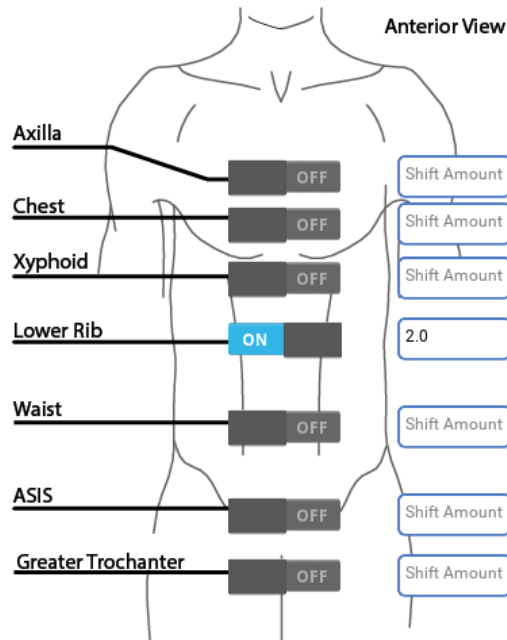


#### Step 4 of 8 (Medial / Lateral Shift - Optional)

- 8) If there are any medial/lateral shifts you would like to make, either enter the number in the input box or turn the slider on the desired level 'on' and then use the buttons to

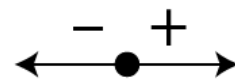
shift. If no medial/lateral shifts, continue to the next page . If you have entered changes, click '**Update Brace**' when complete. After you have closed the popup on the

Fusion 360 screen, you may continue to the next screen by pressing  in the User Interface.



Shift Medial / Lateral  
(- to shift left, + to shift right)

-10 -1 +1 +10



All adjustments in mm

Reset Values




Update Brace



### Step 5 of 8 (Anterior / Posterior Shift - Optional)

- 9) If there are any anterior/posterior shifts you would like to make, either enter the number in the input box or turn the slider on the desired level 'on' and then use the

buttons to shift. If no anterior/posterior shifts, continue to the next page . If you have entered changes, click 'Update Brace' when complete. **After you have closed the popup on the Fusion 360 screen,** you may continue to the next screen by pressing



in the User Interface.

X-Ray View Toggle

XRay ON

## Scoliosis Brace Fitting Sheet

Anterior / Posterior Shift

Step 5 of 8

Lateral View

Axilla	<input type="checkbox"/>	OFF	Shift Amount
Chest	<input type="checkbox"/>	OFF	Shift Amount
Xyphoid	<input checked="" type="checkbox"/>	ON	4.0
Lower Rib	<input type="checkbox"/>	OFF	Shift Amount
Waist	<input type="checkbox"/>	OFF	Shift Amount
ASIS	<input type="checkbox"/>	OFF	Shift Amount
Greater Trochanter	<input type="checkbox"/>	OFF	Shift Amount

Shift Anterior / Posterior  
(- to shift backwards, + to shift forwards)

-10 -1 +1 +10

- +

All adjustments in mm

Reset Values




Update Brace



### Step 6 of 8 (Twist Adjustment - Optional)

10) If there are any levels you would like to see rotated, either enter the number in the input box or turn the slider on the desired level 'on' and then use the buttons to shift. If

no rotations, continue to the next page . If you have entered changes, click 'Update Brace' when complete. **After you have closed the popup on the Fusion 360**

**screen**, you may continue to the next screen by pressing  in the User Interface.



X-Ray View Toggle

XRay ON

## Scoliosis Brace Fitting Sheet

Twist Adjustment

Step 6 of 8

Anterior View

Landmark	Toggle	Rotation Amount
Axilla	OFF	Rotation Amount
Chest	OFF	Rotation Amount
Xyphoid	OFF	Rotation Amount
Lower Rib	ON	3
Waist	ON	-4
ASIS	OFF	Rotation Amount
Greater Trochanter	OFF	Rotation Amount

Rotate  
(- counter-clockwise, + clockwise)

-5° -1° 1° 5°

- +

Reset Values




Update Brace



### Step 7 of 8 (Back Measurements)

11) Fill out dimensions for waist reduction and Velcro slots. For Demo purposes, the required fields are shown below in red. When complete, press the '**Update Brace**' button. **After you have closed the popup on the Fusion 360 screen,** you may continue

to the next screen by pressing  in the User Interface.

X-Ray View Toggle

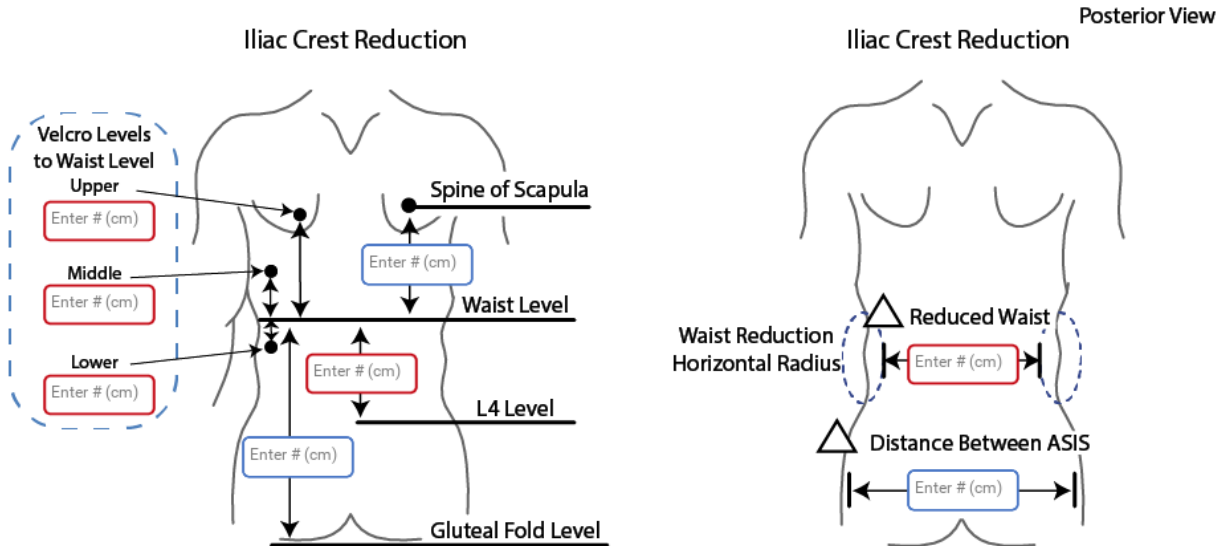
XRay ON

## Scoliosis Brace Fitting Sheet

Step 7 of 8

Back Measurements

\*\*\*Please fill out ALL required fields\*\*\*




Update Brace



### Step 8 of 8 (Side Measurements)

12) Fill out dimensions for the abdominal reduction. Both fields are required. When complete, press the 'Update Brace' button. **After you have closed the popup on the**

**Fusion 360 screen**, you may continue to the next screen by pressing  in the User Interface.

X-Ray View Toggle

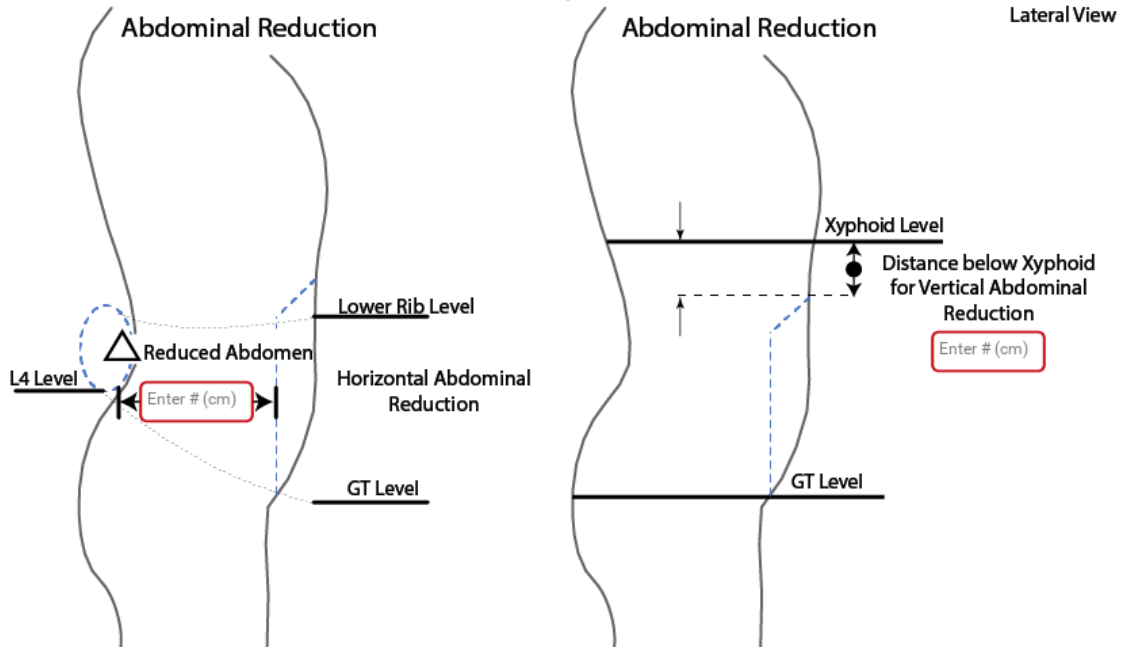
XRay ON

## Scoliosis Brace Fitting Sheet

Step 8 of 8

Side Measurements

\*\*\*Please fill out ALL required fields\*\*\*



Update Brace



[Review and Final Export Settings](#)

13) All values can be reviewed here. If everything looks correct, click '**Confirm Brace Measurements**'.

## Scoliosis Brace Fitting Sheet

Review and Confirm Information.

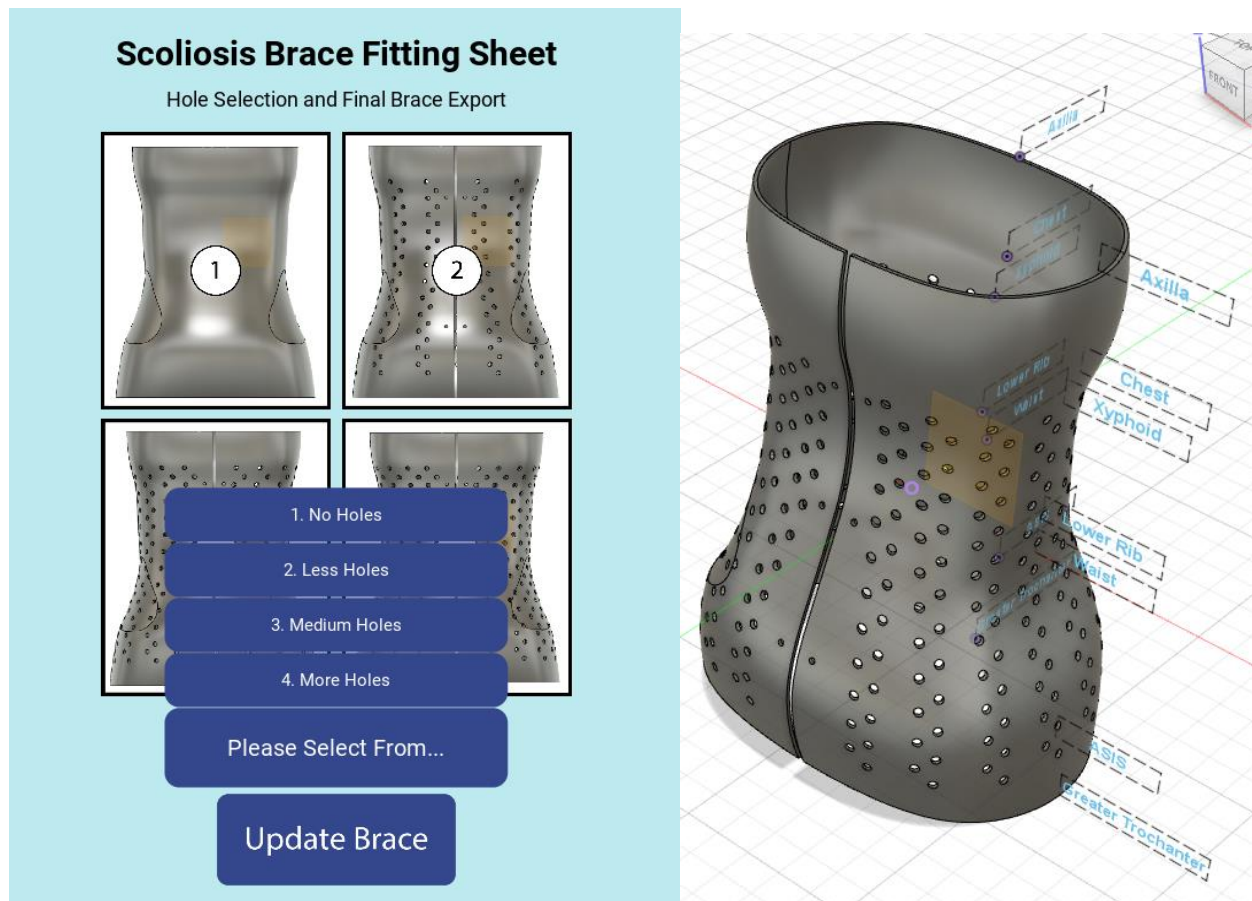
**NOTE:** When you confirm these measurements you will not be able to edit them anymore.  
The next stages will create the brace shell.

AP Axilla: 0	AP ASIS: 0	Lower Velcro: 0	Axilla Shift Y:
ML Axilla: 0	ML ASIS: 0	L4 to Waist: 0	Chest Shift Y:
Axilla Circ.: 0	ASIS Circ.: 0	Gluteal Fold to Waist:	Xyphoid Shift Y: 4.0
AP Chest: 0	AP GT: 0	Scapula to Waist:	Rib Shift Y:
ML Chest: 0	ML GT: 0	ML Finished Waist: 0	Waist Shift Y:
Chest Circ.: 0	GT Circ.: 0	ASIS Distance:	ASIS Shift Y:
AP Xyphoid: 0	Sternal Notch to Waist: 0	AP Finished Waist: 0	GT Shift Y:
ML Xyphoid: 0	Axilla to Waist: 0	Reduction Below Xyphoid: 0	Axilla Rotation:
Xyphoid Circ.: 0	Chest to Waist: 0	Axilla Shift X:	Chest Rotation:
AP Lower Ribs: 0	Xyphoid to Waist: 0	Chest Shift X:	Xyphoid Rotation:
ML Lower Ribs: 0	Lower Rib to Waist: 0	Xyphoid Shift X:	Rib Rotation: 3
Lower Rib Circ.: 0	Waist to ASIS: 0	Rib Shift X: 2.0	Waist Rotation: -4
AP Waist: 0	Waist to GT: 0	Waist Shift X:	ASIS Rotation:
ML Waist: 0	Upper Velcro: 0	ASIS Shift X:	GT Rotation:
Waist Circ.: 0	Middle Velcro: 0	GT Shift X:	

Confirm Brace  
Measurements



14) Select the amount of holes (breathability, comfort) you would like in the scoliosis brace using the dropdown menu. Click '**Update Brace**'. This may take a few minutes.



- 15) Click '**Create Brace Shell**' to export an .stl file for 3D printing and a .csv file to reload into this program in case you want to make changes later. Please wait for the confirmation pop-up in Fusion before closing the program. **Once you have closed the confirmation pop-up** in the Fusion 360 screen, you may close all other screens. The brace has been created.

